

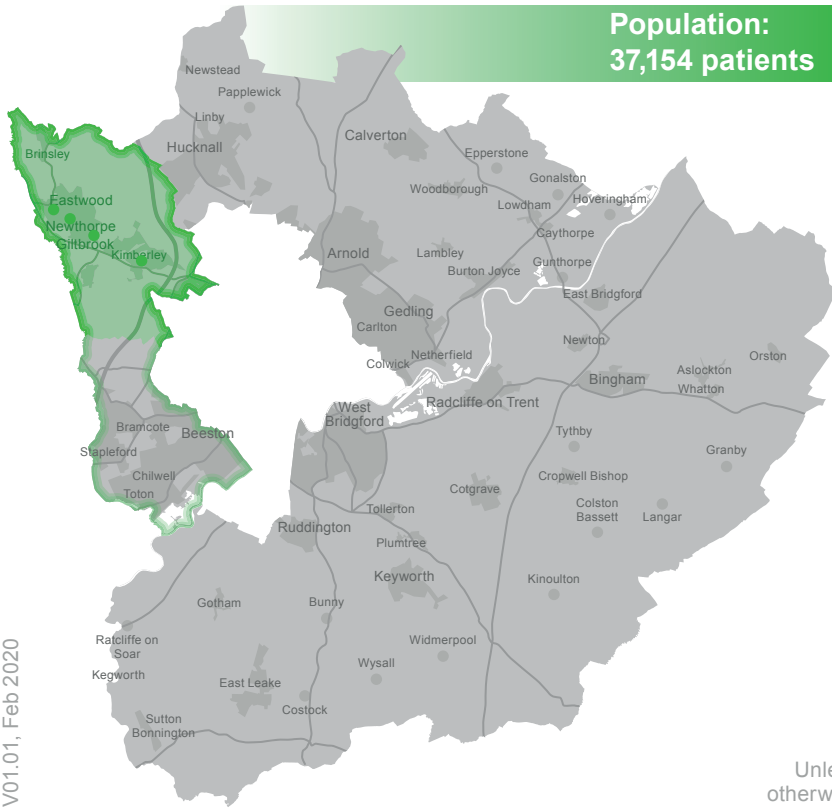


South Nottinghamshire Integrated Care Partnership

Nottingham West PCN: Eastwood neighbourhood

Eastwood Primary Care Centre | Giltbrook Surgery | Hama Medical Centre | Newthorpe Medical Centre

Population:
37,154 patients



“Developing strong, resilient general practice to meet the needs of our local population”

Our priorities

Care homes

We want to work collaboratively to address the high primary care demand for patients living in care homes, with focus on embedding ReSPECT as ‘business as usual’ and educating care home staff.

Low-level mental health

We want to work holistically with local services and community groups to promote inclusion, physical activity and self-management to both prevent and manage low level mental health needs.

Wound management

We want to review and standardise the way we manage provision in order to provide patients with the most effective, locally accessible service, whilst also removing elements of duplication and waste.

V01.01, Feb 2020

Clinical Director (PCN): Dr Tim Heywood
Clinical Lead (neighbourhood): Dr Paul Scullard
PCN Development Manager: Amy Fennelly

Unless otherwise stated, comparisons are to England averages. Source: Notts CC 2019 ▶

High proportion of people aged 65 and over

High reporting of a limiting long-term illness

High back pain and severe back pain prevalence

High prevalence of teenage pregnancy

