

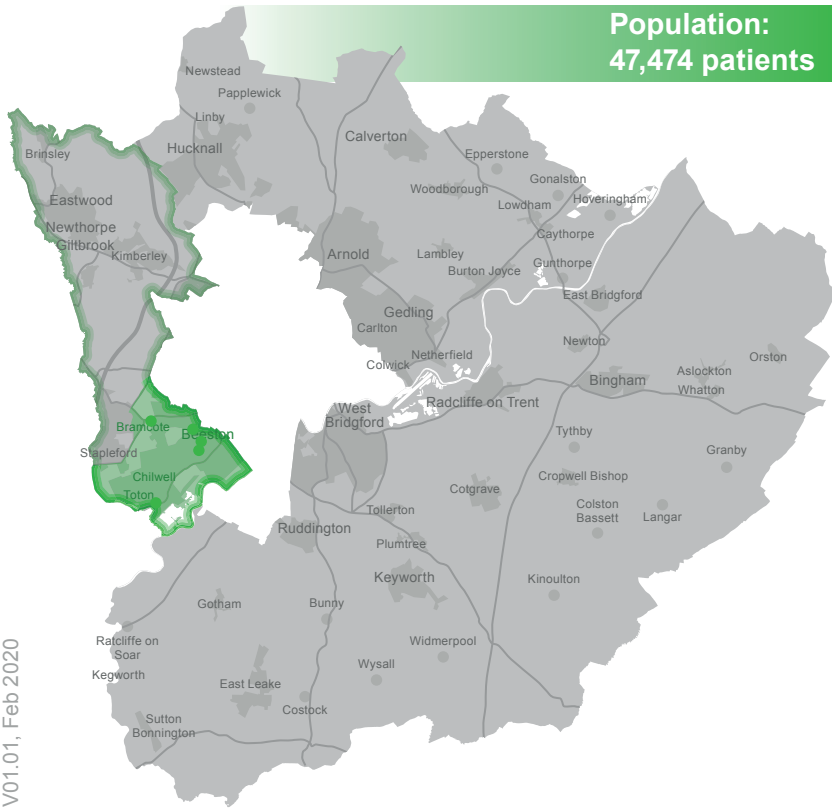


South Nottinghamshire Integrated Care Partnership

Nottingham West PCN: Beeston neighbourhood

Abbey Medical Centre | Bramcote Surgery | Chilwell Valley and Meadows Practice | Manor Surgery | Oaks Medical Centre

Population:
47,474 patients



“Developing strong, resilient general practice to meet the needs of our local population”

Our priorities

Care homes

We want to work collaboratively across the PCN to address the high primary care demand for patients living in care homes. There will be particular focus on embedding ReSPECt documentation as ‘business as usual’ and educating care home staff.

Frailty

We want to ensure we are doing all that we can to fully address the health and wellbeing needs of our frail, elderly patients who live with multiple co-morbidities. We want to be innovative in our approach and aim to improve quality life for this cohort of patients and reduce the number of years they spend living with ill health.

▼ Unless otherwise stated, comparisons are to England averages. Source: Notts CC 2019

Higher death rate from stroke than expected

High proportion of people aged 85 and over

High prevalence of dementia

High prevalence of patients receiving end of life care



Clinical Director (PCN): Dr Tim Heywood
Clinical Lead (neighbourhood): Dr Emma Shapiro
PCN Development Manager: Kelly Wallace