

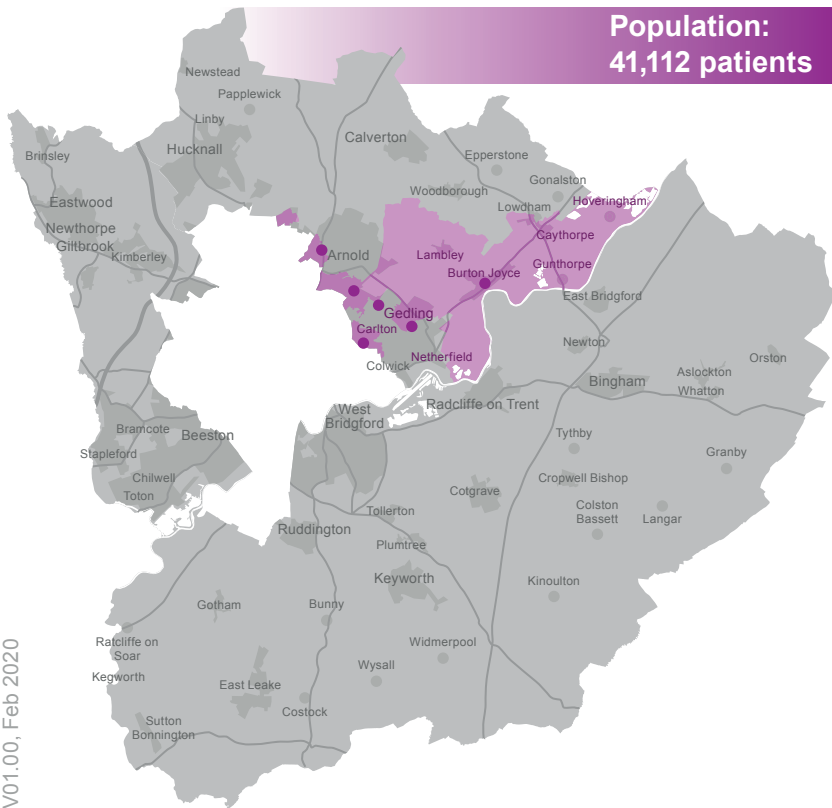


South Nottinghamshire Integrated Care Partnership

Arrow Health Primary Care Network

Daybrook Medical Practice | The Ivy Medical Group | Peacock Practice | Plains View Surgery | Unity Surgery | Westdale Lane Surgery

Population:
41,112 patients



“Committed to improving quality and providing safe and effective care to meet the needs of all our population.”

Our priorities

Moving services into general practice

We will work with other local community services with an aim to deliver the right kind of care, at the right time and in the right place.

GP resilience

We will build resilience through development of new working practices. We will also analyse skill gaps and up-skill staff where required to instil motivation, engagement, development, and retention of the workforce.

▼ Unless otherwise stated, comparisons are to England averages. Source: Notts CC 2019

Higher reporting of limiting long-term illness

High prevalence of back pain and severe back pain

Higher proportion aged 50 to 75 than whole ICP

Lower proportion aged under 15 than whole ICP

V01.00, Feb 2020

Clinical Director: Dr Umar Ahmad
PCN Development Manager: Jayne Bouch

